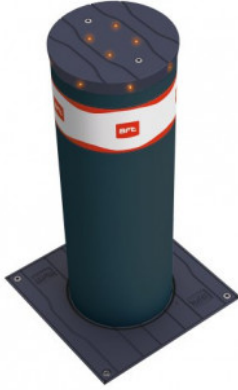


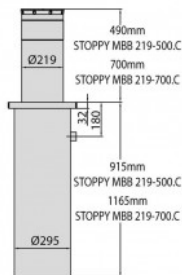
## BFT-STOPPY-500-MBB



## 500X220 ELECTROMECHANICAL AUTO BOLLARD WITH LED LIGHT CROWN

### FEATURES

Internal oil-bath gear motor which gives a higher usage capability. Designed to work in the most extreme conditions, thanks to the metal parts being cathaphoresis treated, and the new EPDM seal integrated in the flange. The LED light cap fits perfectly into the floor flange with the shaft lowered, drastically reducing the ingress of debris into the casing. Needs the [PERSEO CBD](#) dedicated control panel (not included).



### TECHNICAL INFORMATION

- Shaft diameter: 219mm
- Shaft height: 500mm
- Raising time: 6 sec
- Control unit: PERSEO CBD
- Impact resistance: 10500
- Joule Breaking resistance: 150000
- J Slowdown: Yes
- Lock electric brake Manual operation reversible with no power
- Frequency of use: Intensive 1500 movements per day
- Ambient conditions: -20°C +60°C
- Movement with slowdown in opening and closing
- Supply voltage: 230v ± 10% 50/60 Hz

## RELATED PRODUCTS



**BFT-PERSEO-CBE**



**GA-LD100**