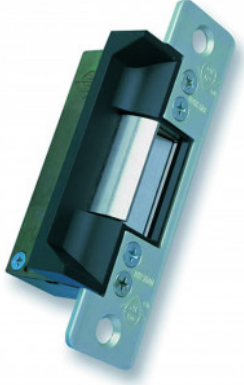


AR-7100-315-628



**7100 12VDC FAIL SAFE ELECTRIC
RELEASE SAA**

The Adams Rite 7100 series is for remote use access control of any door equipped with a compatible deadlatch. It has a flat faceplate for installing in the frame of a single action aluminium door. The 315-628 version is a 12Vdc fail safe electric release.

FEATURES

- Suitable for use on aluminium doors
- Non-handed
- 3 year guarantee

TECHNICAL INFORMATION

- Facility to change duty from fail safe to fail secure and vice-versa
- 907kg holding force (2000lbs)

RELATED PRODUCTS



AR-7100-310-628



AR-7160-315-628



DU01-CP22



ER310-1224