

## AR-7160-315-628



### 7160 12VDC FAIL SAFE 19MM LATCH ELECTRIC RELEASE SAA

The Adams Rite 7160 series is for remote use access control of any door equipped with a compatible deadlatch. It has a flat faceplate for installing in the frame of a single leaf aluminium door. The 315-628 version is a 12Vdc fail safe electric release.

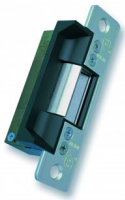
#### FEATURES

- Suitable for use on aluminium doors
- Facility to change duty from fail safe to fail secure and vice-versa

#### TECHNICAL INFORMATION

- Will accommodate a latch throw of up to 19mm
- 907kg holding force (2000lbs)

## RELATED PRODUCTS



**AR-7100-315-628**



**AR-7160-310-628**



**DU03-KGG200SG**



**ER310-1224**