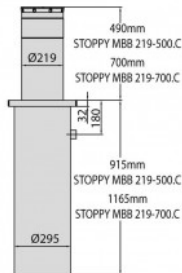
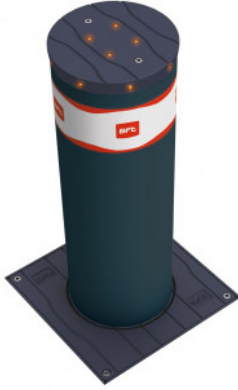


## BFT-STOPPY-MBB-700



### ELECTROMECHANICAL AUTOMATION BOLLARD WITH LED

700mm x 219mm electromechanical automatic bollard complete with LED light crown

#### FEATURES

This bollard is designed to work in extreme conditions with all metal parts cathaphoresis-treated. The seal integrated into the flange is a new EPDM. These automatic bollards are built for high usage, with an internal oil-bath gear motor. With a leading reputation in the gate automation industry leaders, all BFT products are built to exceptional standards and designed to be easy to install. The Stoppy MBB electromechanical bollard has an LED light cap which fits perfectly into the floor flange, when the shaft is lowered. This reduces the risk of debris getting into the casing.

The Stoppy MBB comes in two versions 500 mm or 700 mm in height and 219 mm diameter, all versions are equipped with an LED light crown and are available in two finishes: painted steel coloured RAL 7015 or stainless steel. Needs the [PERSEO CBD](#) control unit (not supplied).

#### TECHNICAL INFORMATION

- Shaft diameter | 219 mm
- Shaft height | 700 mm
- Raising time | 9 sec
- Control unit | PERSEO CBD
- Impact resistance | 10500 Joule
- Breaking resistance | 150000 J
- Slowdown | yes
- Lock | electric brake
- Manual operation | reversible with no power
- Frequency of use | intensive 1500 movements per day
- Ambient conditions | -20°C +60°C
- Movement | with slowdown in opening and closing
- Supply voltage | 230v ± 10% 50/60 Hz

## RELATED PRODUCTS



**BFT-PERSEO-CBE**



**GA-LD100**