

BFT-KIT-ELI-BT-A40

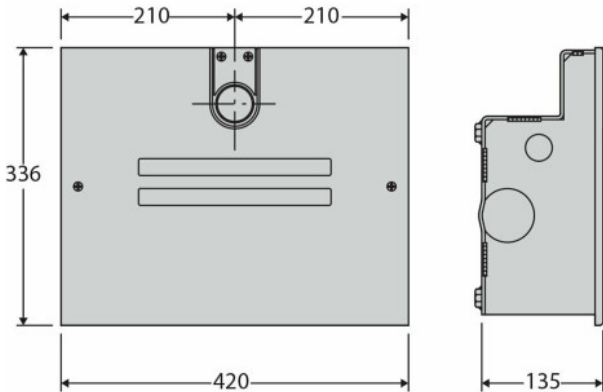


24V FAST ELECTROMECH. UNDERGROUND DOUBLE KIT UP TO 4M GATES

This electro-mechanical double kit is suitable for leaves up to a width of 4m up to 500kg in weight. With slowdown on its opening and closing cycle, the motor can protect itself and reduce noise by not banging into hard stops. As the motor nearly reaches the open and closed position it will start to slow coming to a gentle stop.

FEATURES

- Ideal for intensive use
- Can open a gate to 90° in approx 14 seconds (with slowdown)
- Equipped with physical stops in both directions
- As standard can operate gates up to 120°
- Relative encoder so there is no need to assemble and adjust any limit switches
- Secondary arm allows for fast and stable attachment to the primary shaft
- Quick and simplified installation process saves the installer precious time
- EE Link
- ER Ready
- U-Link



TECHNICAL INFORMATION

- Power supply: 24V
- Gate leaf length: 4m
- Max leaf weight: 500kg
- Control panel: THALIA
- Cycle time: 14 secs (with slowdown)
- Impact reaction: Electronic clutch
- Protection rating: IP67
- Temperature range: -20°C to 55°C