

BFT-KIT-ELI-AC-A40

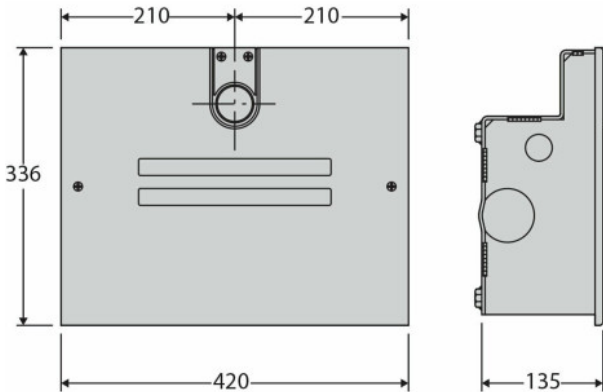


230V FAST ELECTRONMECH. UNDERGROUND DOUBLE KIT FOR 4M GATES

This electro-mechanical double kit is suitable for leaves up to a width of 4m up to 500kg in weight. With slowdown on its opening and closing cycle, the motor can protect itself and reduce noise by not banging into hard stops. As the motor nearly reaches the open and closed position it will start to slow coming to a gentle stop.

FEATURES

- Ideal for intensive use
- Can open a gate to 90° in approx 13 seconds (no slowdown)
- Equipped with physical stops in both directions
- As standard can operate gates up to 120°
- Electronic clutch
- EE Link
- ER Ready
- U-Link



TECHNICAL INFORMATION

- Power supply: 230V
- Gate leaf length: 4m
- Max leaf weight: 500kg
- Control panel: RIGEL 6
- Cycle time: 13 secs (no slowdown)
- Impact reaction: Electronic clutch
- Protection rating: IP67
- Temperature range: -20°C to 55°C