

## BFT-KIT-ELI-BT-A35V

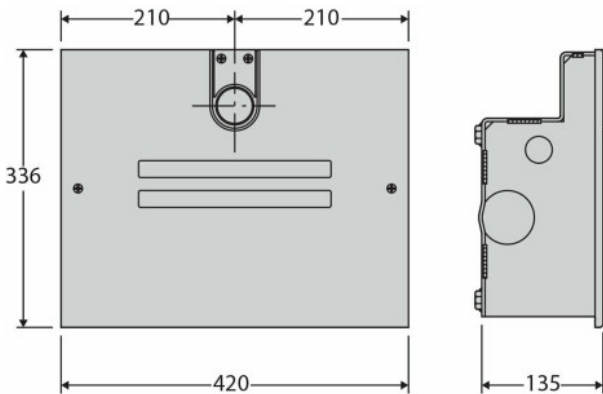


### 24V FAST ELECTROMECH. UNDERGROUND DOUBLE KIT FOR 3.5M GATES

This electro-mechanical double kit is suitable for leaves up to a width of 3.5 m up to 200kg in weight. With slowdown on its opening and closing cycle, the motor can protect itself and reduce noise by not banging into hard stops. The Eli models are equipped with physical stops in both directions and as standard can operate gates up to 120° and designed for private residences and small apartment blocks.

#### FEATURES

- Fast operating speed
- Ideal for intensive use
- Can open a gate to 90° in approx 10 seconds (with slowdown)
- Equipped with physical stops in both directions
- As standard can operate gates up to 120°
- Relative encoder so there is no need to assemble and adjust any limit switches
- Secondary arm allows for fast and stable attachment to the primary shaft
- Quick and simplified installation process saves the installer precious time
- EE Link
- ER Ready
- U-Link



#### TECHNICAL INFORMATION

Power supply: 24V  
Gate leaf length: 3.5m  
Max leaf weight: 200kg  
Opening angle: 120° max, 45°min  
Protection rating: IP67  
Temperature range: -20°C to 55°C