

## DRM-135-24



### 24VDC WALL MOUNT DOOR RETAINER

This wall mounted door retainer is ideal for holding open doors in corridors that need to be closed on activation of a fire alarm (a spring door closer is required in addition). It has a push button that enables manual release when required.

#### FEATURES

- Manual release push button
- Anti residual magnetism device
- Wall mount
- Stylish design (silver colour finish)

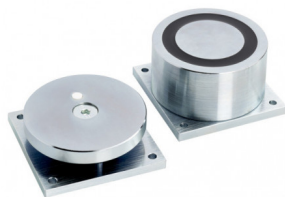
#### TECHNICAL INFORMATION

- Holding force: 55kg (121lb)
- Voltage: 24Vdc
- Current draw: 70mA
- Dimensions:  
Magnet 90mm(H) x 75mm(W) x 35mm(D)  
Armature plate 65mm(H) x 65mm(W) x 53mm(D)

## RELATED PRODUCTS



**DRM-BRACKET**



**EXT-R12/24**



**GD830S-12**



**GD830S-24**