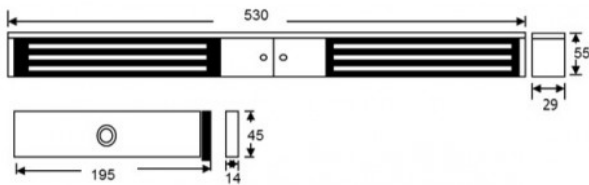


EM08DS



MIDI MONITORED DOUBLE MAGLOCK WITH DOOR STATUS MONITORING

Up to 364kg holding force for indoor applications. Monitoring provides LED lock status indication and relay contacts for signalling. This model includes door status monitoring contacts to monitor the door position.

FEATURES

- Dual voltage
- Surface mount
- With door status monitoring
- Silver anodised aluminium
- Top plate, armature and fixings included
- Current draw (each side): 500mA @ 12Vdc/ 250mA @ 24Vdc
- Door status monitoring available
- Up to 360kg holding force (per side)

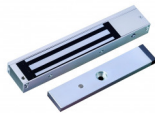
TECHNICAL INFORMATION

- Voltage tolerance: +/- 15%
- Operating temp: -10°C to +55°C
- Humidity: 0-95% non condensating
- Weight: 6kg approx.
- Relay: COM/NO/NC (1A@24Vdc)
- Reed switch door contact

RELATED PRODUCTS



CP3-LSRC-DB



EM07DS



EM850ZL



PSU5A-12