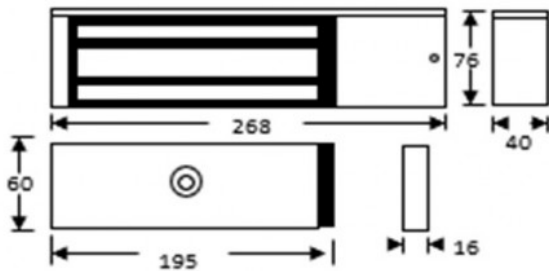


## EM10DS-ARM/SAFETY



## STANDARD UNMONITORED MAGLOCK WITH DOOR STATUS AND ARM STRAP

Standard single unmonitored magnetic lock designed for indoor applications where 545kg holding force is required. This model includes door status monitoring contacts to monitor the door position.

### FEATURES

- MOV provides spike and surge protection
- Fail-safe operation (power to lock)
- Anti-residual magnetism protection
- Top-plate, armature-plate and fixings included
- Dual voltage 12Vdc or 24Vdc (selectable)
- Surface mount
- Silver anodised aluminium finish
- Door status monitoring

### TECHNICAL INFORMATION

- Holding force: up to 545kg (1200lb)
- Current draw = 500mA @ 12Vdc/250mA @ 24Vdc
- Voltage tolerance: +/- 15%
- Operating temp: -10°C to +55°C
- Humidity: 0-95% non-condensating
- Weight: 4.8kg approx.
- Reed switch door contact

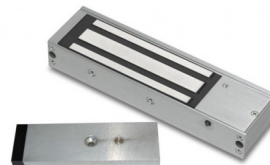
## RELATED PRODUCTS



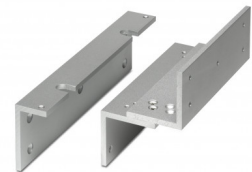
**CP3**



**EM-AH10-1**



**EM20DS**



**EM500ZL**