

EM300L-FIRE



ADJUSTABLE L BRACKET FOR SLIM FIRE RATED MAGLOCK

Fire rated adjustable L bracket to suit slim fire rated maglocks. Selectable fixing points allow optimum positioning of the maglock on an outward opening door.

FEATURES

- Compatible with SSP Slim cased fire rated maglocks
- Adjustable fixing bracket for the maglock to be moved forward or back
- Satin anodised aluminium finish
- 2 brackets required for double magnets

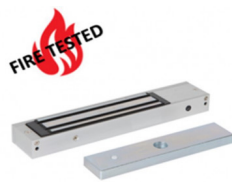
TECHNICAL INFORMATION

- For use on outward opening doors
- Dimensions: 250(L) x 38(W) x 38(H)mm
- Maximum adjustment = 25mm in 8.3mm intervals
- 2 brackets required for double magnets

RELATED PRODUCTS



DG1000N



EM01-FIRE



EM300ZL-FIRE



EM320M-FIRE