

EM320M-FIRE



SURFACE ARMATURE HOUSING FOR SLIM FIRE RATED MAGLOCKS

This fire rated, surface armature housing is useful to improve aesthetics and is ideal for situations where drilling through the door is undesirable.

FEATURES

- Surface Mount
- Used to avoid drilling through the door
- Satin anodised aluminium finish with plastic end caps
- Fire Rated

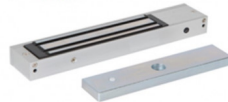
TECHNICAL INFORMATION

- 193mm(L) x 45mm(W) x 16mm(D)
- 2 required per double maglock
- Stands the armature plate off the surface of the door by 9mm
- If used with 'DS' (door status) maglocks one of the end caps must be removed.

RELATED PRODUCTS



DG1000N



EM02-FIRE



EM300L-FIRE



EM300ZL-FIRE