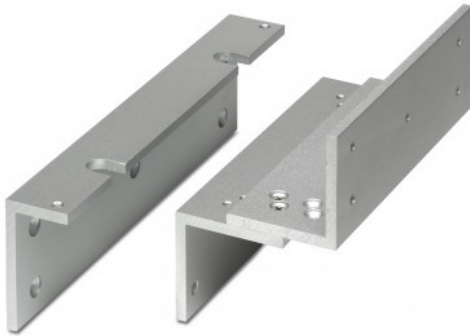


EM500ZL



Z & L BRACKET FOR STANDARD MAGLOCK

This adjustable Z & L bracket set provides a simple fixing method for maglocks on inward opening gates. The Z bracket is adjustable to cater for recessed door.

FEATURES

- Compatible with all SSP 'standard' maglocks
- Satin anodised aluminium finish
- Adjustable Z-bracket
- Suitable for use on inward opening doors
- 2 brackets are required for double maglocks

TECHNICAL INFORMATION

- Z = 186mm(L) x 63mm(D) x 126mm(H)
- L = 268mm(L) x 47mm(D) x 73mm(H)
- Maximum horizontal adjustment of the Zbracket = 30mm, in 10mm intervals

RELATED PRODUCTS



DG500



EM20



EM500AZLG-DC



SPB004S