

## ER310LM-24



### 24VDC MONITORED ANSI RELEASE LONG FACEPLATE FAIL SAFE/SECURE

This monitored 24Vdc ANSI style electric release (strike) is supplied with a long faceplate and is field selectable for fail-safe or fail-secure operation. Recommended for timber door frames but also suitable for metal frames.

#### FEATURES

- Ansi style release
  - Switchable fail safe / fail secure
  - Lip extensions available
  - Reversible
  - 24Vdc Current consumption with 150mA current draw
  - Lock monitoring
  - Long faceplate suitable for wooden doors
- 
- TIP; Fail safe means when the power is cut the door will open, fail secure means when the power is cut the door will remain shut.

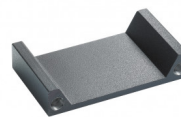
## RELATED PRODUCTS



**ER310-1224**



**ER310SM-24**



**LP050**



**SASHFP**