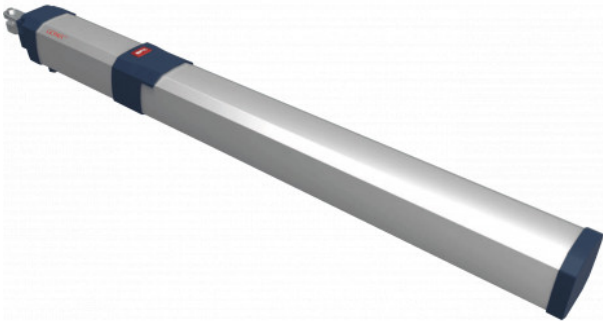


## BFT-GIUNO-ULTRA-BT-A20



### 24V HYDRAULIC MOTOR FOR GATES UP TO 2M

24v hydraulic swing gate operator built for intensive use. Suitable for swing gate leaves weighing up to 300kg and up to two metres wide. This gate opener also features built-in obstacle detection through the D-Track Torque management system.

#### FEATURES

- U-Link
- ER Ready
- EE Link
- Suited to industrial and residential use as well as multi-resident sites
- Built-in obstacle detection through the exclusive D-Track Torque management system

#### TECHNICAL INFORMATION

- Power supply: 24V
- Gate leaf length: 2M
- Max leaf: 300kg
- Control panel: THALIA P
- Cycle time: 14 sec
- Impact reaction: d-track
- Frequency of use: Very intensive
- Opening angle: 110°