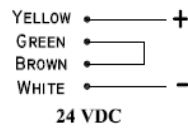
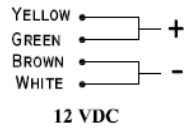


EXTERNAL ELECTROMAGNETIC LOCK INSTALLATION CONCEPT & ACCESSORIES USER GUIDE

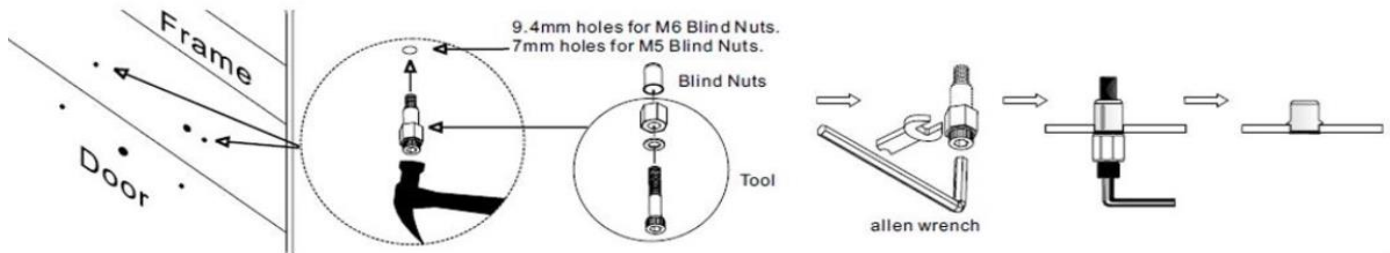
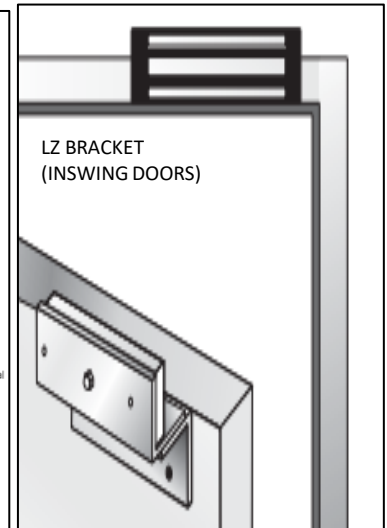
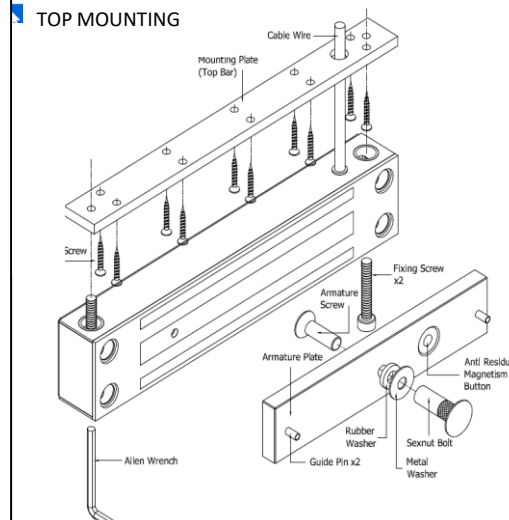
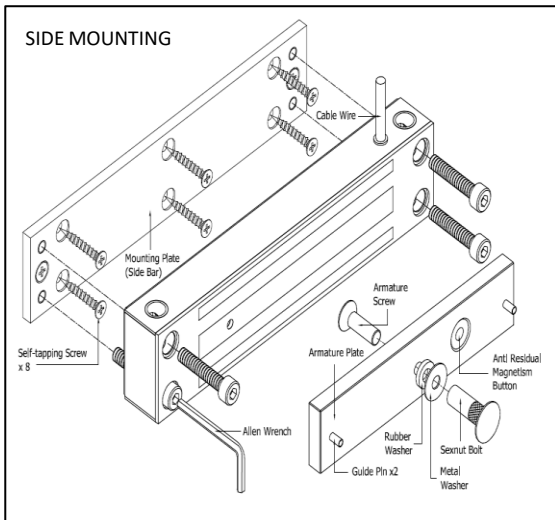
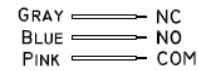
Model	EXT600	EXT800	EXT800-UN	EXM800	EXM800-UN	EXT1200	EXT1200-UN	EXM12-24	EXM12-24-UN
Holding force up to(LBS)	600	800	800	800	800	1200	1200	1200	1200
voltage input (DC)	12 / 24 V	12 / 24 V	12 / 24 V	12 / 24 V	12 / 24 V	12 / 24 V	12 / 24 V	12 / 24 V	12 / 24 V
current draw(mA)	480 / 240	480 / 240	480 / 240	480 / 240	480 / 240	480 / 240	480 / 240	480 / 240	480 / 240
Reed switch (Signal)	YES	YES	N/A	YES	N/A	YES	N/A	YES	N/A

WIRING INSTRUCTIONS

IMPORTANT!
Before the power supply is switched on, set the wiring correctly.



REED SENSOR CONTACT



Insert 2 blind nuts into separate holes, one for each fixing screw

Use the allen wrench, to tighten the blind nut. (Don't overtighten)

This compresses the blind nut so that it remains permanently Fixed, then remove the tool.

Installation step

1. If the armature plate is being attached directly to the door leaf, drill the armature plate holes in the door, using the sticker template provided.
2. Attach the armature plate to the door with the M8 screw and domed barrel-nut provided.
3. Ensure that the two guide-pins are located in the holes, to keep the armature plate aligned.
4. With the door closed, mark the door frame at the edge of the armature in order to properly align the electro-magnet to the armature plate.
5. If either the top plate or the side plate is to be used, securely mount it to the frame using the screws provided, or with other suitable fixings. Mount the electromagnet to the plate with the Allen screws provided. Note: Fixing plates are not included with all models.
6. Install one rubber washer between two metal washers. This will allow the armature plate to pivot slightly and settle fully on the electromagnetic surface, to compensate for misalignment.
7. Connect the power supply (12Vdc or 24Vdc refer the wiring instructions) then close the door to test. De-energise the electromagnet and make any necessary adjustments to complete the installation.
8. Follow the routine maintenance instructions below to help extend the life of the electromagnet lock and prevent corrosion.

Application and Maintenance:

1. Cleaning : Before applying oil, clean the lock surface with a cloth to remove dirt and moisture.
2. Apply a thin layer of oil using a cloth or spray (if using WD-40). Avoid over -applying, as this can attract debris.
3. Frequency : Service the lock every 3 to 6 months, or more frequently in harsh environment .

Protective corrosion Oil

1. WD-40 : while primarily a solvent , it also provides short-term corrosion protection.
2. Silicone Oil : Provides excellent water resistance and lubrication without attracting dust and dirt.
3. Mastermech: Anti rust light oil in solvent blend (with moly solids as lubricant LPG propellant).